

Iron? Who needs an iron and ironing board when **SteamGENIE® DIGITAL** steams away wrinkles 5 times faster!

This powerful product is designed to quickly refresh fabrics and remove wrinkles from garments, upholstery and draperies - all with the natural power of steam!

Use **SteamGENIE®** to effortlessly glide smoothly over clothes, linens, curtains, upholstery and more, while steaming away wrinkles and odors as well as eliminating harmful allergens like dust mites. Choose from 3 steam level modes by simply selecting the level of steam power from the LED display screen.

So retire the iron and engage in the **SteamGENIE®** for ease of use, convenience and even the fun of steaming, without damaging your precious, delicate fabrics!

Features

- Suitable for Home and Commercial Use
- Steam Produced in One Minute
- Foot-touch Level Changer
- Digital Display of Steam Power
- Empty Tank Auto Cut-Off with Alarm
- Easy to Refill, Low-Profile Water Tank
- Durable Housing Unit
- Slide Hanger
- Aluminum Rod Set
- Waterproof Switches
- Plug-in Hose Attachment
- Drain Valve for Easy Cleaning
- Detachable Safety Wiring Wrap

Specifications

| | |
|-------------------------|-------------------------|
| Packing (cm) | 38L x 27W x 43H |
| Voltage | 230 V |
| Power | 1000 - 1600 W (3-Steps) |
| Digital Control | Low / Medium / High |
| Net Weight | 7.5 Kg |
| Gross Weight | 9 Kg |
| Over Heating Protection | Yes |
| Auto-Off Safety Device | Yes |
| Water Shortage Alarm | Yes |



For any enquiry, contact us at 6873 7881 / info@maier.com.sg.
View MAIER's full range of products at

www.mymaier.com

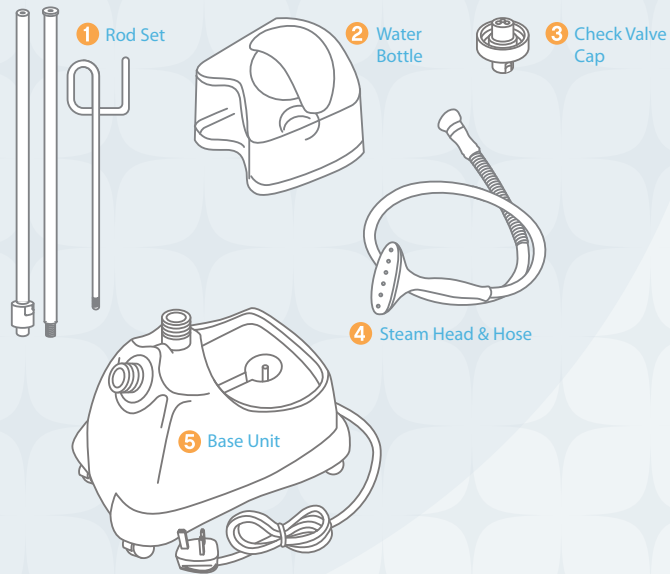
life gets better with

maier™

MAIER Home Innovation
enquiry@maier.com.sg
6873 7881
www.mymaier.com

SteamGENIE® DIGITAL
Garment Steamer MHI-3

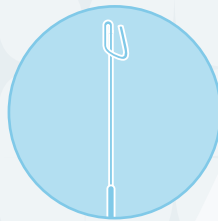
Make Sure You Have...



Safety Instructions

- Never operate if product's cord or plug are damaged.
- Do not attempt to disassemble or repair the product. Return product for proper examination and repair.
- To reduce likelihood of circuit overload, do not operate another high voltage product on the same circuit.
- Allow product to cool completely before emptying reservoir and storing.
- Never leave the product unattended when plugged in.
- Hot steam is emitted during use, do not touch the nozzle when in use.
- Never pull the cord from outlet to disconnect. Instead, hold the plug head and pull to disconnect.
- Do not handle the plug with wet hands.
- Close supervision is necessary when product is used in proximity of children.
- Do not use this product outdoors.
- Care should be taken to arrange the cord so as to avoid pulling or tripping over.
- Do not steam garments while they are on a person.

Step-by-Step Assembly Guide



Connect the 3 piece rod set tightly.



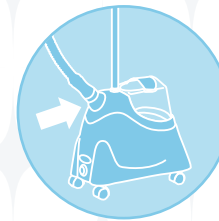
Secure the rod set to the base unit.



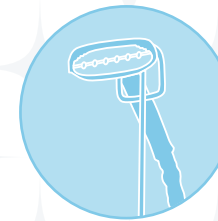
Fill the bottle with fresh tap water, cap with the check valve cap.



Fit the water bottle into the base unit and aligned nicely with the check valve cap.



Plug the steam hose into the steam vent and lock up.



Hang steam head in upright position on the hose hanger.

Operating Instructions

- Fill the water bottle with tap water. Invert water bottle into the water reservoir of unit.
- To power on the steamer, slide the ON/OFF switch to the ON position. When power is on, the switch illuminates.
- Steam is produced from the nozzle in one minute.

TIP

During operation, the steamer hose may gurgle. This is a normal result of condensation collecting inside the hose. Stretch the hose to its full length upward to allow excess moisture inside the hose to drain back into the unit.

CAUTION

Steamer hose may become hot when in use, avoid prolonged contact.

ALL READY TO STEAM!

Plug into proper power outlet, switch ON and allow the unit to produce steam within one minute.

REMEMBER...

Always OFF the unit and empty bottle of all water content when not in use. Remember to disconnect the steamer from the electrical outlet and store appropriately when not in use.

You are strongly advised to keep this instruction guide for future references.

Steaming Garments

- To remove garment wrinkles, hold the nozzle with steam facing away from you. Begin from the bottom of the fabric, allowing steam to rise within the garment. Slowly move the nozzle to the top of the fabric.
- Remove the nozzle from the garment and smooth the fabric with your free hand. Some fabrics are best steamed on the underside of the material. This allows the fibers of the fabrics to relax thus, eliminating wrinkles.
- Heavier fabrics may require repeated steaming. Repeat as necessary. With practice, you will gain speed and efficiency.
- To steam linens, towels, handkerchiefs and napkins, drape items over a rod or place over a towel rack.
- DO NOT directly touch velvet or silk with the steam head.

Caring For Your *SteamGENIE*[®] DIGITAL

- For cleaning and/or storage of the steamer, ensure the switch is set to OFF and unplug the unit from the electrical outlet.
- For continued smooth operation of the steamer, NEVER store the unit over prolonged period (over 1 month) without first cleaning and removing excess water from the reservoir and water container to prevent mineral build up in the unit.

Thank you for choosing MAIER™ as your trusted homeware. Your patronage is much appreciated by all at MAIER™. For safety precautions, PLEASE READ THIS INSTRUCTION GUIDE carefully before using.